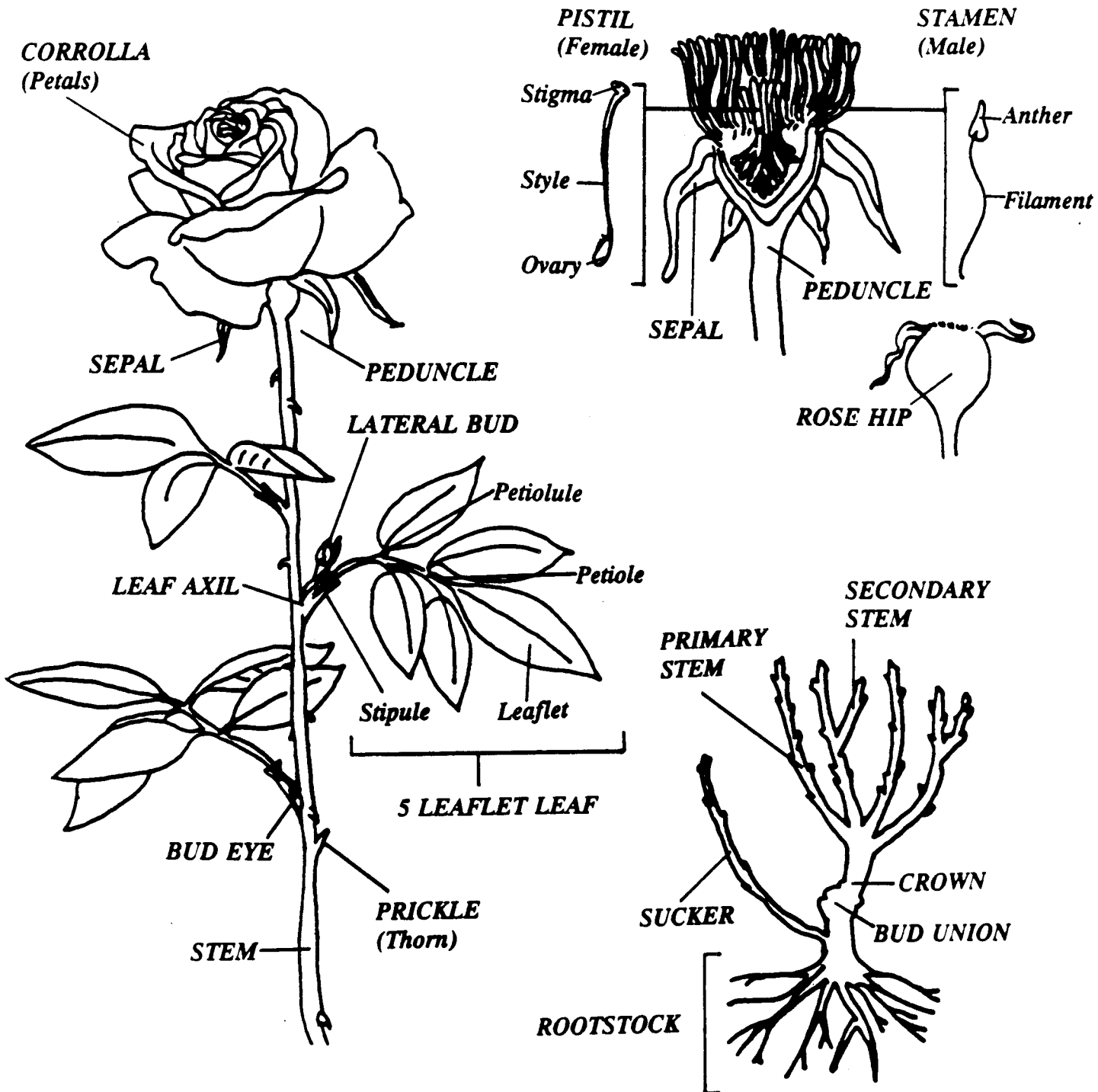


# Potomac Rose Society Information Bulletin

DEDICATED TO SERVE THOSE WHO ENJOY ROSES  
District of Columbia and Potomac Area of Maryland and Virginia  
Affiliated with the American Rose Society

## LANGUAGE OF THE ROSE



**Anther:** Organ borne at the upper end of a stamen, that generates and discharges ripened pollen.

**Auricle:** "Ear-like" tip of a stipule.

**Basal Break:** New cane appearing just above the bud eye.

**Bract:** Leaf-like growth at the base of the peduncle.

**Bud:** That stage of flower development in which the sepals are down, the petals just beginning to unfurl, and the configuration of the center is not usually evident.

**Bud Eye:** A small, swollen node from which a stem will develop.

**Bud Union:** Spot just above the root stock where bud eye is grafted onto root stock.

**Calyx:** Outer protective covering of a flower, consisting of five sepals.

**Cane:** A primary stem of the plant.

**Carpel:** One section of the pistil containing the ovule.

**Climber:** 6-20' tall; may have any type of blooms; usually grown on fence or trellis.

**Corolla:** Outer envelope of a flower, consisting of separate petals in the rose.

**Deadheading:** Removing spent flower blossoms to encourage growth from dormant lateral buds.

**Disbudding:** Pinching off side buds growing below the terminal bud.

**Florabunda:** About 3' high with blooms in many small clusters; usually grafted.

**Floret:** An individual bloom in a spray.

**Grandiflora:** Very tall with blooms that resemble hybrid teas, but smaller and in clusters of 5-7; always grafted.

**Guard Petals:** Outer-most petals of the bloom, sometimes showing green or white coloration.

**Hip:** Fleshy, berry-like seed receptacle.

**Hybrid Tea:** 4-5' high; single or double bloom on a single long stem or in clusters

of 3-5; always grafted.

**Lateral Bud:** Point where a secondary stem emerges from a cane.

**Leaf:** Unit of rose foliage consisting of a leafstalk supporting 3, 5, or 7 leaflets.

**Leaf Axil:** Point where a leafstalk joins the stem or cane.

**Leafstalk:** Central axis of a leaf.

**Miniatures:** Usually very small floribundas or hybrid teas; always grown on their own root systems.

**Ovary:** That part of the pistil containing the ovules.

**Ovule:** Minute structure which, after fertilization, becomes a plant seed.

**Peduncle:** Uppermost portion of a stem, from the bract to the base of the flower, bearing a solitary flower.

**Petaloids:** Small, inner-most, incompletely-formed petals of a bloom.

**Petiole:** Portion of the leafstalk which supports the terminal leaflet.

**Petiolule:** Portion of the leaf which attaches the side leaflets to the leafstalk.

**Pistil:** Pollen-receiving reproductive organ of a flower, consisting of a stigma, style, and ovary.

**Prickle:** Commonly called a thorn; comes from the skin of the stem.

**Sepal:** One of the green, leaf-like segments forming the calyx.

**Spray:** A group of florets on one stem.

**Stamen:** Pollen-producing reproductive organ of a flower, consisting of a filament and anther.

**Stigma:** Apex of the pistil, upon which pollen is deposited at pollination.

**Stipule:** One of the small, paired, leaf-like appendages at the base of a leafstalk.

**Style:** Slender column, through which pollen passes from stigma to ovary.

**Sucker:** Cane that forms from the root-stock and appears below the bud union.

This information bulletin is based on articles from *The Newsletter of THE POTOMAC ROSE SOCIETY*. If you have questions on this or any other aspect of rose growing, please contact one of our consulting rosarians for free advice. For information regarding membership, contact Joseph M. Covey, (301) 279-0028.